

# the strawberry

## pinotage rosé

### TASTING NOTES

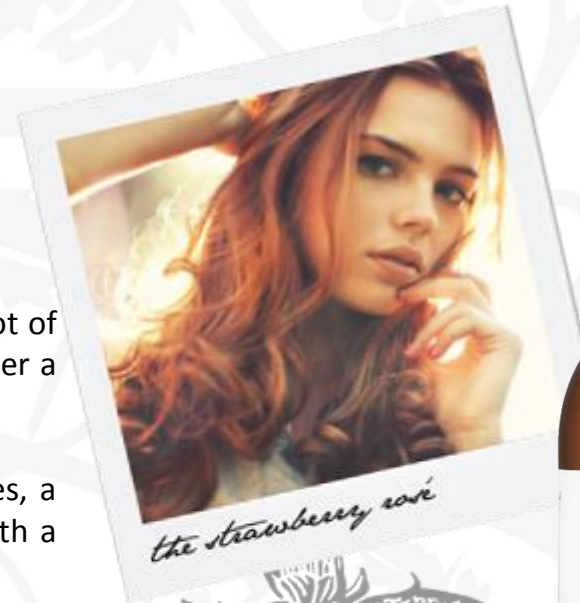
The object with The Collection range is to offer excellent quality wines at a fair price. A lot of work was done to create packaging that is both eye catching and also allows the customer a peak at the intriguing flavour profile.

The Strawberry has a lovely salmon colour. The nose is reminiscent of fresh strawberries, a firm acidity adds freshness to the palate. The wine is lively and clean on the palate with a good finish.

Pinotage grapes often can create a beautiful rosé, of which this wine is a fine example. It is a lovely refreshing summer wine.

### TECHNICAL INFORMATION

Cultivar	100% Pinotage
Wine analysis	RS 2.0g/l - pH 3.45 - TA 5.2g/l
ALC	12.5%
Appellation	Western Cape



## the collection

Roos Family Vineyards | this is for everyone | ENVIRONMENTALLY FRIENDLY WINES FROM SOUTH AFRICA



[www.thecollectionwines.com](http://www.thecollectionwines.com)